



352.432.3047
SuperbMetals.com

SMP Colors

26 Ga



Polar White
SRI: 77 26G



Saddle Tan
SRI: 53 26G



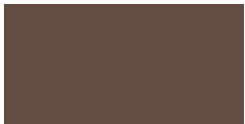
Old Town Gray
SRI: 45 26G



Charcoal Gray
SRI: 39 26G



Black
SRI: 31 26G



Cocoa Brown
SRI: 37 26G



Rustic Red
SRI: 38 26G



Copper Penny
SRI: 55 26G



Gallery Blue
SRI: 24 26G



Evergreen
SRI: 37 26G

KYNAR Colors

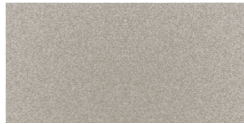
Premium



Bright Copper
SRI: 44 26G/24G/032



Bright Silver
SRI: 68 26G/24G/032



Champagne
SRI: 38 24G/032



Regal Red
SRI: 49 24G/032



Regal Blue
SRI: 28 26G/24G/032

24 Ga & .032 Aluminum



Almond
SRI: 75 24G/032



Bayside Black
SRI: 1 24G/032

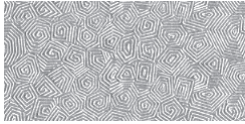


Charcoal
SRI: 29 24G/032

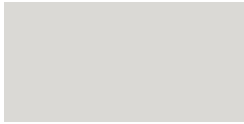


Slate Blue
SRI: 29 24G/032

24 Ga, 26 Ga & .032 Aluminum



Galvalume
26 & 24Ga



Regal White
SRI: 85 26G/24G/032



Sandstone
SRI: 53 26G/24G/032



Sierra Tan
SRI: 30 26G/24G/032



Dove Gray
SRI: 48 26G/24G/032



Slate Gray
SRI: 39 26G/24G/032



Matte Black
SRI: 26 26G/24G/032



Mansard Brown
SRI: 29 26G/24G/032



Dark Bronze
SRI: 24 26G/24G/032



Medium Bronze
SRI: 24 26G/24G/032



Classic Green
SRI: 30 26G/24G/032



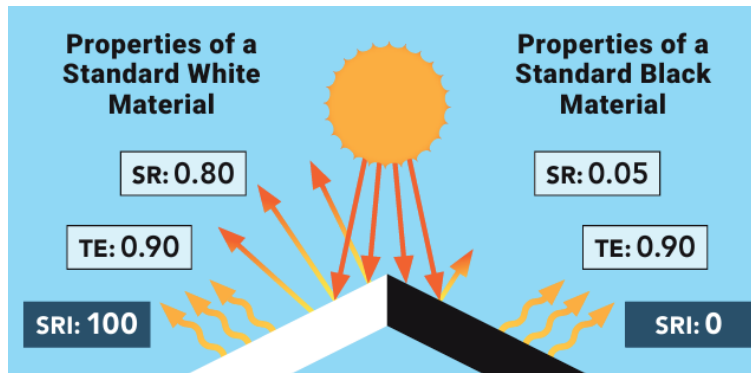
Terra Cotta
SRI: 42 26G/24G/032



Colonial Red
SRI: 35 26G/24G/032

Understanding the Solar Reflective Index (Excerpt taken from CRRC https://coolroofs.org/documents/CRRC-SRI-Documents_2024-04-17.pdf)

The Solar Reflectance Index (SRI) is an indicator of the ability of a roof surface to return solar energy to the atmosphere. Roofing material surfaces with a higher SRI will be cooler than surfaces with a lower SRI under the same solar energy exposure, especially on a sunny day. Using materials with higher SRI values can enhance building occupant comfort and reduce air conditioning use.



VARIOUS FACTORS CAN INFLUENCE a material's Solar Reflectance and the resulting calculated SRI value. Below are examples of the two different types of roofing products, along with the range of three-year weathered SRI values found in the CRRC Rated Roof Products Directory for products of each type. SRI values can vary greatly within a material type. Home and building owners, developers, and roofing contractors can consult the CRRC Directory to identify the SRI value for a specific product or browse by color, manufacturer, and more.



ASPHALT SHINGLES
Three-year weathered SRI range: 14-34



FACTORY-COATED METAL
Three-year weathered SRI range: 20-90

	Product (SMP) Sherwin-Williams® WeatherXL™	FluroPon (PVDF) Sherwin-Williams® Fluropon®
Resin	SILICONIZED MODIFIED POLYESTER (SMP)	All of our coils are coated with Sherwin-Williams® Fluropon® coil coating systems, containing 70% PVDF Kynar 500®/Hylar 5000® resins.
Benefits	Great durability in tough conditions, very good weatherability, resistance to chalking, fading and scratching, with good color retention	Exceptional resistance to outdoor elements such as UV rays, stains, chemicals, heat, humidity and corrosive salt, excellent color-retention and consistency, high film integrity, great flexibility, formability and overall adhesion
Color	Available in a wide palette of colors, many of which are available in solar-reflective formulations to help achieve LEED points	Available in a wide variety of colors, sheens, gloss levels and special effects available with solar reflective pigments to help achieve LEED points
End Uses	Exterior: Commercial, agricultural, and residential metal roofing and wall panels, metal building components, pre-engineered building systems, rainware, carports, entry and garage doors	Exterior: Iconic and monumental buildings, commercial and residential metal roofing and wall panels, composite and insulated wall panel systems
Sustainability	Energy Savings with solar reflective coating options	Energy savings with solar reflective pigments
Chalk	Very Good	Excellent
Fade	Very Good	Excellent
Weathering	Very Good	Excellent
Dirt Resistance	Very Good	Excellent
Hardness	Very Good	Good
Flexibility	Good	Excellent
Corrosion	Good	Good

* Metal products, finishes, colors, and sizes available are subject to change without notice. Contact Superb Metals for current pricing and availability.

** Oil canning is an inherent characteristic of light-gauge, cold-formed metal products, does not affect the integrity of metal panels and is not a cause for rejection.